

# Shiloh



TOTAL SQ. FT.  
2,137

3 BEDROOMS  
2 BATHS



## QUALITY CONSTRUCTION

You can feel secure about your choices with United-Bilt Homes' outstanding value, quality, and craftsmanship. Our "homemade" approach, quality materials and construction management set us apart from other builders.

- Heated Sq. Ft.: 1,546
- Master Bedroom with Tray Ceiling
- Large Master Bath with Double Sinks and Walk-In Closets
- Kitchen with Pantry and Optional Bar
- Dining Area
- Large Living Area with Outside Access and Optional Fireplace
- Optional Patio
- 2 Car Garage with Extra Storage Area
- Utility Room off Garage
- Front Porch



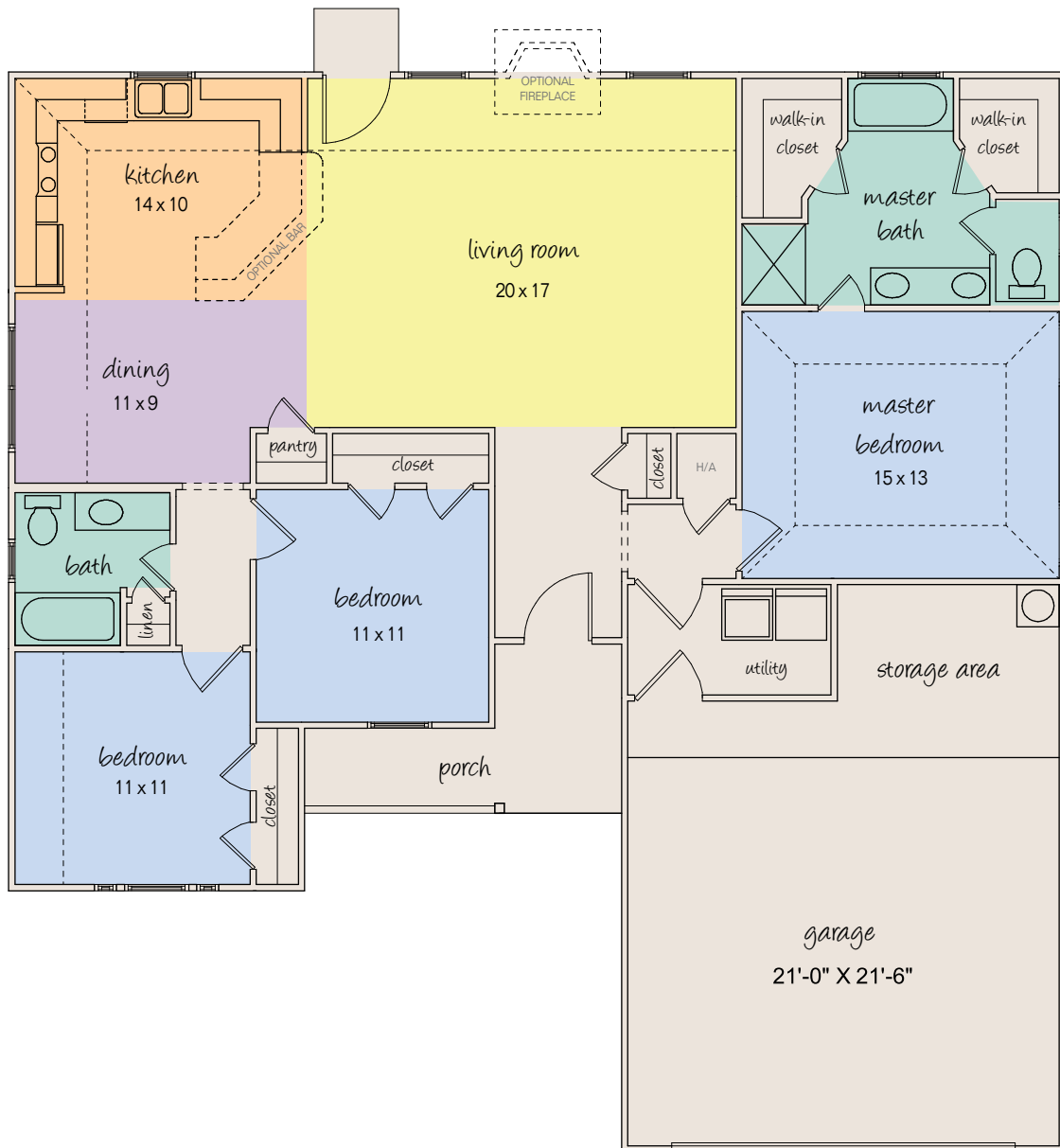
*Homemade just for you*®

1-800-822-2458 ♦ [ubh.com](http://ubh.com)

# Shiloh

TOTAL SQ. FT.  
2,137

3 BEDROOMS  
2 BATHS



The illustrations shown are artistic renderings and include some optional features. Shrubs, sidewalks, driveways and landscaping have been added for effect. Room sizes are approximate. Features and options shown in illustrations and floor plans may differ from those you purchase. Please see your United-Bilt Homes sales associate for details.